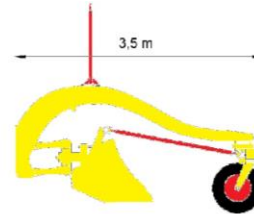


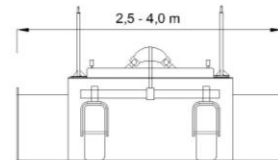
MNG - 25.40

Application areas: roads

Type: front grader extensible blade
 Min. required power: 140 HP
 Max required power: 200 HP
 Overall length: 3,50 m
 Overall width: 4,00 m
 Working width: 2,50 m – 4,00 m
 Maneuver width: 2,00 m
 Work wheel track: 2,00 m
 Maneuver wheel track: 1,60 m
 Wheels height: 0,84 m
 Blade height: 1,00 m
 Estimated weight: 3.500 kg
 Frame design: single frame
 Opening blade system: hydraulic
 Folding blade: no
 Extensible blade: yes
 Opening axles system: fix
 Extensible axles: no
 Front bogie: n° 2 pivoting wheels
 Slope of the blade: hydraulic 20°
 Blade angle: hydraulic 25°
 Adjustable attack angle: yes (through front loader)
 Lights system: optional
 Receiver mast: n° 2 hydraulic extensible
 Earth volume per run: 4,8 m³
 Finishing speed (km/h): 5 km/h
 Transport distance (m): 80 m
 Laser system: hydraulic interface group
 Ready for laser system: yes
 Ready for GPS system: yes
 Laser system precision on 450 m: ± 2 mm
 GPS system precision on 5 km: ± 10 mm



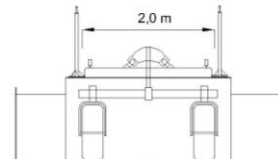
Overall length



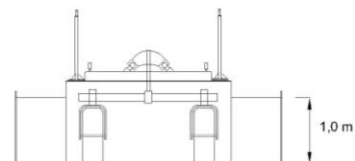
Working width



Maneuver width



Work wheel track



Blade height